

Danfoss SM160T4RC

Specifications

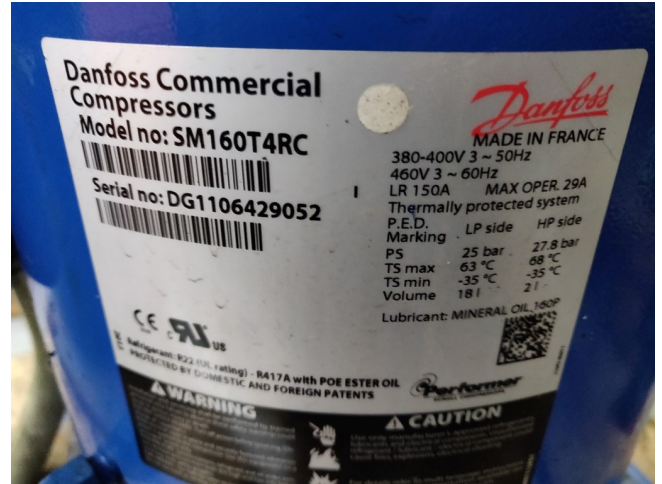
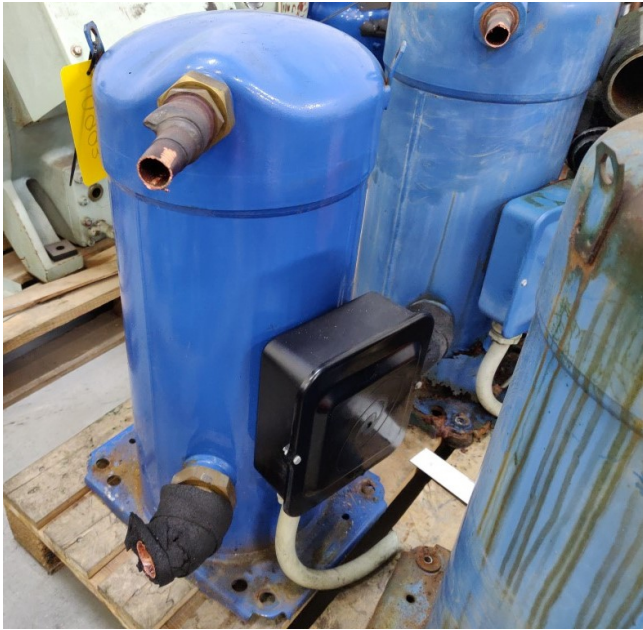
Marka	Danfoss
Typ	SM160T4RC
Czynnik chłodzący	Freon
kW at +10°C/+40°C	13KW at 7.2 °C / 54.4 ° and 60Hz
Stock	1



Description

Used Danfoss SM160T4RC

Used Danfoss SM160T4RC scroll compressor Freon refrigeration . Our capacity table is based on the used type of Freon. You can also use this compressor on alternative types of Freon. For all the other specs (if available), see the picture of the manufacturer model plate or the attached pdf file. *Why choose for HOSBV? Were not only the largest used refrigeration specialist in Europe, but also, we deliver all equipment including an extensive test, warranty and industrial cleaning. *Optional we can also perform a new paint job and arrange the logistics.



50-Hz data

Model	Nominal Cap. 60 Hz TR	Nominal cooling capacity		Power input kW	A max A	Efficiency		Sound power dB(A)	Swept volume cm ³ /rev	Displacement m ³ /h	Oil charge dm ³	Net weight kg	
		W	Btu/h			COP W/W	E.E.R. Btu/h/W						
R22 SINGLE	SM084	7	20400	69600	6.12	17	3.33	11.4	70	114.5	19.92	3.3	72
	SM090	7.5	21800	74400	6.54	17	3.33	11.4	70	120.5	20.97	3.3	72
	SM100	8	23100	79000	6.96	19	3.33	11.3	70	127.2	22.13	3.3	72
	SM110	9	25900	88600	7.82	20	3.32	11.3	75	144.2	25.09	3.3	80
	SM115	9.5	28900	95600	8.31	25	3.37	11.5	76	155.0	26.97	3.8	80
	SM120	10	30100	102800	8.96	29	3.36	11.5	75	166.6	28.99	3.3	80
	SM125	10	30100	102800	8.93	25	3.37	11.5	76	166.6	28.99	3.8	80
	SM148	12	36100	123100	10.80	32	3.34	11.4	79	199.0	34.60	3.6	86
	SM160	13	39100	133500	11.60	29	3.37	11.5	79.5	216.6	37.69	4.0	94
	SM161	13	39000	133200	11.59	32	3.37	11.5	79.5	216.6	37.69	3.6	86
	SM175	14	42000	143400	12.46	35	3.37	11.5	80	233.0	40.54	6.2	103
	SM185	15	45500	155300	13.62	35	3.34	11.4	80	249.9	43.48	6.2	103
	SY240	20	61200	208700	18.20	50	3.36	11.5	82	347.8	60.50	8.0	160
	SY300	25	78200	267000	22.83	69	3.43	11.7	82	437.5	76.10	8.0	160
SY380	30	92000	313900	26.82	72	3.43	11.7	85	531.2	92.40	8.4	163	
R407C SINGLE	SZ084	7	19300	66000	6.13	17	3.15	10.7	73	114.5	19.92	3.3	72
	SZ090	7.5	20400	69600	6.45	17	3.16	10.8	73	120.5	20.97	3.3	72
	SZ100	8	21600	73700	6.84	19	3.15	10.8	73	127.2	22.13	3.3	72
	SZ110	9	24600	84000	7.76	20	3.17	10.8	77	144.2	25.09	3.3	80
	SZ115	9.5	26900	91700	8.49	25	3.16	10.8	78	155.0	26.97	3.8	80
	SZ120	10	28600	97600	8.98	29	3.18	10.9	77	166.6	28.99	3.3	80
	SZ125	10	28600	97500	8.95	25	3.19	10.9	78	166.6	28.99	3.8	80
	SZ148	12	35100	119800	10.99	32	3.19	10.9	80.5	199.0	34.60	3.6	86
	SZ160	13	37600	128200	11.58	29	3.24	11.1	80.5	216.6	37.69	4.0	94
	SZ161	13	37900	129500	11.83	32	3.21	10.9	80.5	216.6	37.69	3.6	86
	SZ175	14	40100	136900	12.67	35	3.17	10.8	81	233.0	40.54	6.2	103
	SZ185	15	43100	147100	13.62	35	3.16	10.8	81	249.9	43.48	6.2	103
	SZ240	20	59100	201800	18.60	50	3.18	10.9	83.5	347.8	60.50	8.0	160
	SZ300	25	72800	248300	22.70	69	3.20	10.9	84	437.5	76.10	8.0	160
SZ380	30	89600	305900	27.60	72	3.25	11.1	86.5	531.2	92.40	8.4	163	

TR = Ton of Refrigeration
 COP = Coefficient Of Performance
 EER = Energy Efficiency Ratio

Rating conditions